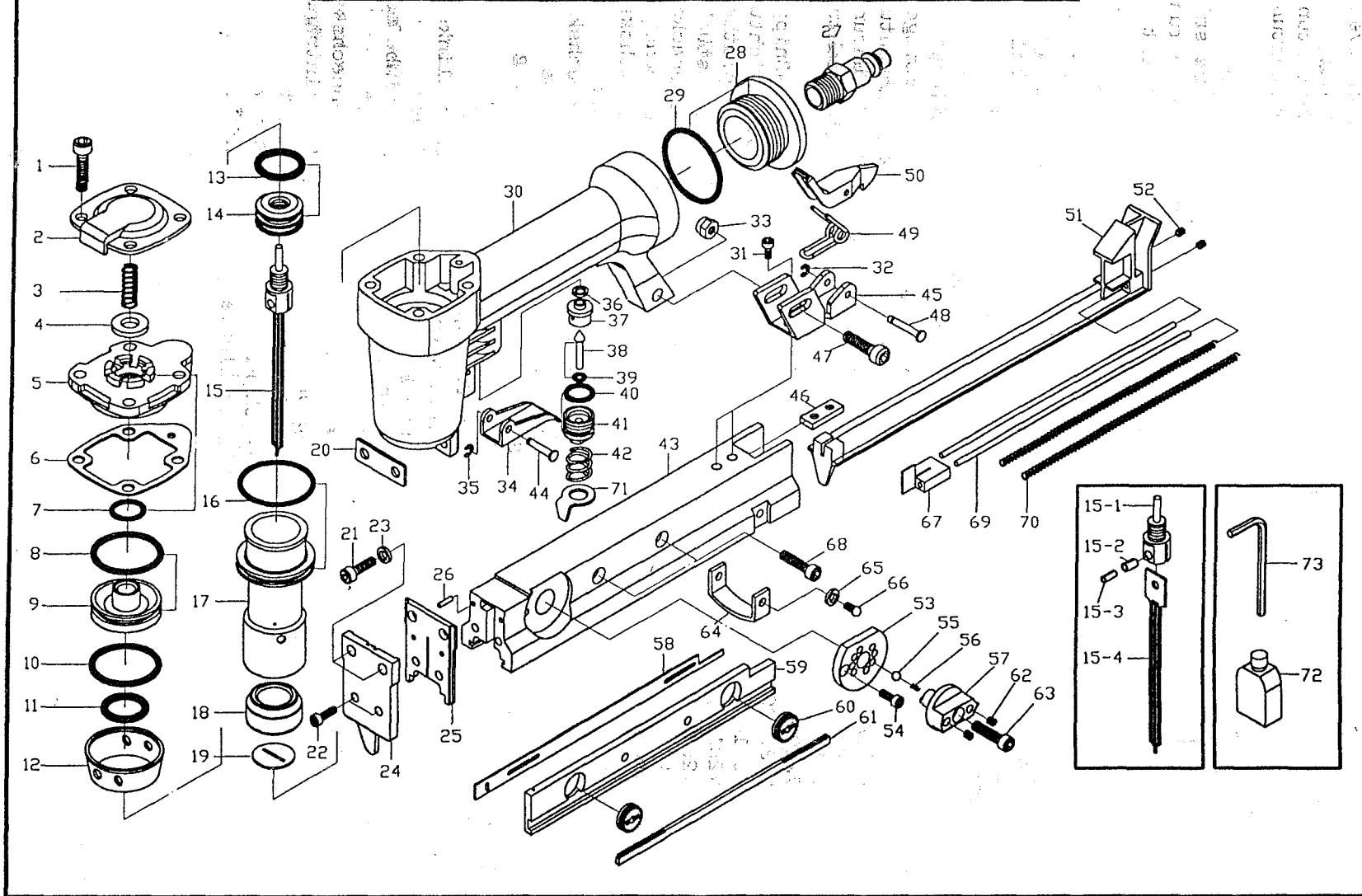


# PO.6/20 (PA/E1-01) EXPLODED VIEW



# P0.6/20 (PA/E1-01) PINNER PARTS LIST

DATE:1997.09

REP. NO.	PART. NO.	DESCRIPTION	SPECIFIC -ATION	Q' TY	REP. NO.	PART. NO.	DESCRIPTION	SPECIFIC -ATION	Q' TY	REP. NO.	PART. NO.	DESCRIPTION	SPECIFIC -ATION	Q' TY
1	KM0518	HEX.SOC.HD.BOLT	M5×0.8-20L	4	23	KG0503	SPRING WASHER	φ 5	2	49	FA2001	LATCH SPRING		1
2	UE0501	EXHAUST CAP		1	24	PA2101	COVER PLATE		1	50	FA1401	LATCH		1
3	UE0701	COMPRESSIÓ SPRING		1	25	PA2201	GUIDE PLATE		1	51	PA3302	MAGAZINE ASSY.		1
4	UE0601	PISTON STOP		1	26	KS2006	SPRING PIN	φ 2-8L	2	52	KK0403	HEX.SOC.HD.BOLT	M4×0.7-4L	2
5	UE0201	CYLINDER CAP		1	27	PA3001	COUPLING PLUG	1/4"	1	53	PA2701	FIXED ROLLER		1
6	UE0401	CAP SEAL		1	28	PA2001	END CAP		1	54	KF0306	FLAT HD.SCREW	M3×0.5-8L	1
7	KO1203	O-RING	PI2	1	29	KO3503	O-RING	ARP568-126	1	55	KB0403	STEEL BALL	φ 4	2
8	KO2706	O-RING	26.8×2.4	1	30	UE0101	BODY		1	56	PA3101	SPRING		2
9	UE0301	HEAD VALVE PISTON		1	31	KM0406	HEX.SOC.HD.BOLT	M4×0.7-8L	2	57	PA2801	ADJUSTABLE ROLLER		1
10	KO2203	O-RING (1B)	22×3	1	32	KE2503	E-RING	φ 2.5	1	58	PA2501	ADJUSTABLE PLATE		1
11	KO1003	O-RING (1B)	ARP568-204	1	33	KN0503	HEX.NUT	M5×0.8	1	59	PA2601	ADJUSTABLE SEAT		1
12	UE1201	COLLAR		1	34	UE1801	TRIGGER		1	60	PA2901	GEARWHEEL		2
13	KO1606	O-RING	PI6	1	35	KE2503	E-RING	φ 2.5	1	61	PA2401	GEAR RACK		1
14	PE0701	MAIN PISTON		1	36	UE1501	SEAL		1	62	KK0503	HEX.SOC.HD.SCREW	M5×0.8-5L	2
15	PA1401	DRIVER ASSY.		1	37	UE1701	TRIGGER VALVE SEAT		1	63	KM0421	HEX.SOC.HD.BOLT	M4×0.7-18L	1
15-1	PA4601	STEM		1	38	UE1401	TRIGGER VALVE STEM		1	64	PA3701	MAGAZINE RETAINER		1
15-2	KS4003	SPRING PIN	φ 4-10L	1	39	KO0203	O-RING	1.8×1.8	1	65	KG0403	SPRING WASHER	φ 4	2
15-3	KS2503	SPRING PIN	φ 2.5-10L	1	40	KO1006	O-RING	PI0	1	66	KR0406	BUTTON HD.BOLT	M4×0.7-8L	2
15-4	PA4201	DRIVER		1	41	UE1601	TRIGGER VALVE GUIDE		1	67	PA3401	PUSHER ASSY.		1
16	KO3003	O-RING	S30	1	42	UE1301	COMPRESSION SPRING		1	68	KM0403	HEX.SOC.HD.BOLT	M4×0.7-6L	2
17	PE0801	CYLINDER		1	43	PA2302	MAGAZINE CAP		1	69	PA3501	GUIDE STEM		2
18	PE0901	BUMPER		1	44	PA1901	TRIGGER PIN		1	70	PA3601	PUSHER SPRING		2
19	PA1602	NOZZLE		1	45	PA3202	SUPPORT		1	71	UH1301	TRIGGER STOP		1
20	PE0601	SPACER		1	46	PA3801	FIXED BLOCK		1	72	KZ0004	OIL BOX		1
21	KM0518	HEX.SOC.HD.BOLT	M5×0.8-20L	2	47	KM0518	HEX.SOC.HD.BOLT	M5×0.8-20L	1	73	KA0402	HEX.BAR WRENCH	D4	1
22	KM0415	HEX.SOC.HD.BOLT	M5×0.7-14L	2	48	PA3901	LATCH PIN		1					

# P0.6/20 (PA/E1-01) PINNER PARTS LIST

DATE:1997.09

REP. NO.	PART. NO.	DESCRIPTION	SPECIFIC -ATION	Q' TY	REP. NO.	PART. NO.	DESCRIPTION	SPECIFIC -ATION	Q' TY	REP. NO.	PART. NO.	DESCRIPTION	SPECIFIC -ATION	Q' TY
1	KM0518	HEX.SOC.HD.BOLT	M5×0.8--20L	4	23	KG0503	SPRING WASHER	φ 5	2	49	FA2001	LATCH SPRING		1
2	UE0501	EXHAUST CAP		1	24	PA2101	COVER PLATE		1	50	FA1401	LATCH		1
3	UE0701	COMPRESSION SPRING		1	25	PA2201	GUIDE PLATE		1	51	PA3302	MAGAZINE ASSY.		1
4	UE0601	PISTON STOP		1	26	KS2006	SPRING PIN	φ 2-8L	2	52	KK0403	HEX.SOC.HD.BOLT	M4×0.7--4L	2
5	UE0201	CYLINDER CAP		1	27	PA3001	COUPLING PLUG	1/4"	1	53	PA2701	FIXED ROLLER		1
6	UE0401	CAP SEAL		1	28	PA2001	END CAP		1	54	KF0306	FLAT HD.SCREW	M3×0.5--8L	1
7	KO1203	O-RING	P12	1	29	KO3503	O-RING	ARP568-126	1	55	KB0403	STEEL BALL	φ 4	2
8	KO2706	O-RING	26.8×2.4	1	30	UE0101	BODY		1	56	PA3101	SPRING		2
9	UE0301	HEAD VALVE PISTON		1	31	KM0406	HEX.SOC.HD.BOLT	M4×0.7--8L	2	57	PA2801	ADJUSTABLE ROLLER		1
10	KO2203	O-RING (1B)	22×3	1	32	KE2503	E-RING	φ 2.5	1	58	PA2501	ADJUSTABLE PLATE		1
11	KO1003	O-RING (1B)	ARP568-204	1	33	KN0503	HEX.NUT	M5×0.8	1	59	PA2601	ADJUSTABLE SEAT		1
12	UE1201	COLLAR		1	34	UE1801	TRIGGER		1	60	PA2901	GEARWHEEL		2
13	KO1606	O-RING	P16	1	35	KE2503	E-RING	φ 2.5	1	61	PA2401	GEAR RACK		1
14	PE0701	MAIN PISTON		1	36	UE1501	SEAL		1	62	KK0503	HEX.SOC.HD.SCREW	M5×0.8--5L	2
15	PA1401	DRIVER ASSY.		1	37	UE1701	TRIGGER VALVE SEAT		1	63	KM0421	HEX.SOC.HD.BOLT	M4×0.7--8L	1
15-1	PA4601	STEM		1	38	UE1401	TRIGGER VALVE STEM		1	64	PA3701	MAGAZINE RETAINER		1
15-2	KS4003	SPRING PIN	φ 4--10L	1	39	KO0203	O-RING	1.8×1.8	1	65	KG0403	SPRING WASHER	φ 4	2
15-3	KS2503	SPRING PIN	φ 2.5--10L	1	40	KO1006	O-RING	P10	1	66	KR0406	BUTTON HD.BOLT	M4×0.7--8L	2
15-4	PA4201	DRIVER		1	41	UE1601	TRIGGER VALVE GUIDE		1	67	PA3401	PUSHER ASSY.		1
16	KO3003	O-RING	S30	1	42	UE1301	COMPRESSION SPRING		1	68	KM0403	HEX.SOC.HD.BOLT	M4×0.7--6L	2
17	PE0801	CYLINDER		1	43	PA2302	MAGAZINE CAP		1	69	PA3501	GUIDE STEM		2
18	PE0901	BUMPER		1	44	PA1901	TRIGGER PIN		1	70	PA3601	PUSHER SPRING		2
19	PA1602	NOZZLE		1	45	PA3202	SUPPORT		1	71	UH1301	TRIGGER STOP		1
20	PE0601	SPACER		1	46	PA3801	FIXED BLOCK		1	72	KZ0004	OIL BOX		1
21	KM0518	HEX.SOC.HD.BOLT	M5×0.8--20L	2	47	KM0518	HEX.SOC.HD.BOLT	M5×0.8--20L	1	73	KA0402	HEX.BAR WRENCH	D4	1
22	KM0415	HEX.SOC.HD.BOLT	M5×0.7--14L	2	48	PA3901	LATCH PIN		1					